

Unique Submersible Trash Pumps

GAS POWERED FLEX-SHAFT SUBMERSIBLE TRASH PUMP

P212

The Original
FLEX-SHAFT PUMP
For Over 30 years

FlexPump™ flex shaft driven heavy-duty pumps are portable and versatile and can be used in multiple applications.



Used in the following industries: Rental, Sewer, Plumbing Contractors, Utility Vault Contractors, Truck Wash, Pig and Dairy Farmers, Harbor Authorities, and Golf Courses etc.



Heavy-duty cast iron / Aluminum design for handling solids, effluent, dirt and debris.

High performance, up to 280GPM or 80 FT. of head.
**NO PRIMING,
NO ELECTRICITY,
NO HYDRAULICS.**



Powered by a
5HP HONDA GX160
Engine

The Muddy Miracle

GAS POWERED FLEX-SHAFT SUBMERSIBLE TRASH PUMP

P212

The Original
FLEX-SHAFT PUMP
For Over 30 years

0.5 inch high tensile steel multi-strand, multi-layer inner core fully grease lubricated, 19 ft Long (Optional 10 ft. extension)

Core end

Zinc-plated ferrule swaged onto casing

Lip seals (x3) for optimum sealing

Durable double race bearing ensuring long service life

Stainless Steel studs

Three eye nuts for easy dismantle and cleaning

Heavy cast Aluminum pump body

Replaceable wear plates

Non-clog impeller solid cast iron

Heavy-duty 1.5 inch double wire braided casing, 19 ft long with quick-coupling end

Adapter

O-ring

Spindle made from 303 Stainless Steel eliminating corrosion

Bearing housing for protection

2" Aluminum female adapter (Optional 3")

Lip seals (x4) for optimum sealing

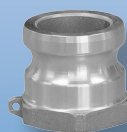
Cast Aluminum strainer with 1-1/4 inch openings



Options



10 Ft. Flex-Shaft Extension



Pump Adapter



Discharge Hoses

| Model # | Size |
|---------|------|
| F02611 | 10' |

| Model # | Size |
|-----------|------|
| 3020-A-AL | 3" |

| Model # | Size |
|----------------|----------|
| 1145-2000-50QC | 2" x 50' |
| 1145-3000-50QC | 3" x 50' |